



S-70[™]
BLACK HAWK[®]
MULTI-MISSION HELICOPTER

SIKORSKY
A LOCKHEED MARTIN COMPANY

RUGGED, VERSATILE & ALWAYS MISSION READY

The BLACK HAWK® Helicopter is the world's most versatile utility helicopter with 4,000 flying worldwide in 36 countries and 15 million flight hours, including over 5 million combat hours. The BLACK HAWK® Helicopter has proven itself in the most austere of environments providing an operational readiness rate of over 92% in combat conditions.





A MILITARY HELICOPTER FROM BIRTH

BLACK HAWK® Helicopters are Designed for Combat Conditions



Survivable

Every BLACK HAWK® Helicopter is built to Military Standards for High Mass Retention which ensures cabin volume integrity with 20G forward, 20G down, 10G up, 18G lateral forces applied, making the BLACK HAWK® Helicopter survivable in the most rigorous combat conditions.



Versatile

One Helicopter. Many Missions. Every BLACK HAWK® Helicopter offers unparalleled performance in a variety of configurations so when the mission suddenly changes, the BLACK HAWK® Helicopter can adapt, quickly.



Dependable

BLACK HAWK® Helicopters have flown over 5 Million hours in recent Combat. 365, 24/7 you can count on the BLACK HAWK® Helicopter to be mission ready! Day or Night, Rain or Snow, Extreme Hot or Severe Cold, Anytime, Anywhere. Proven.

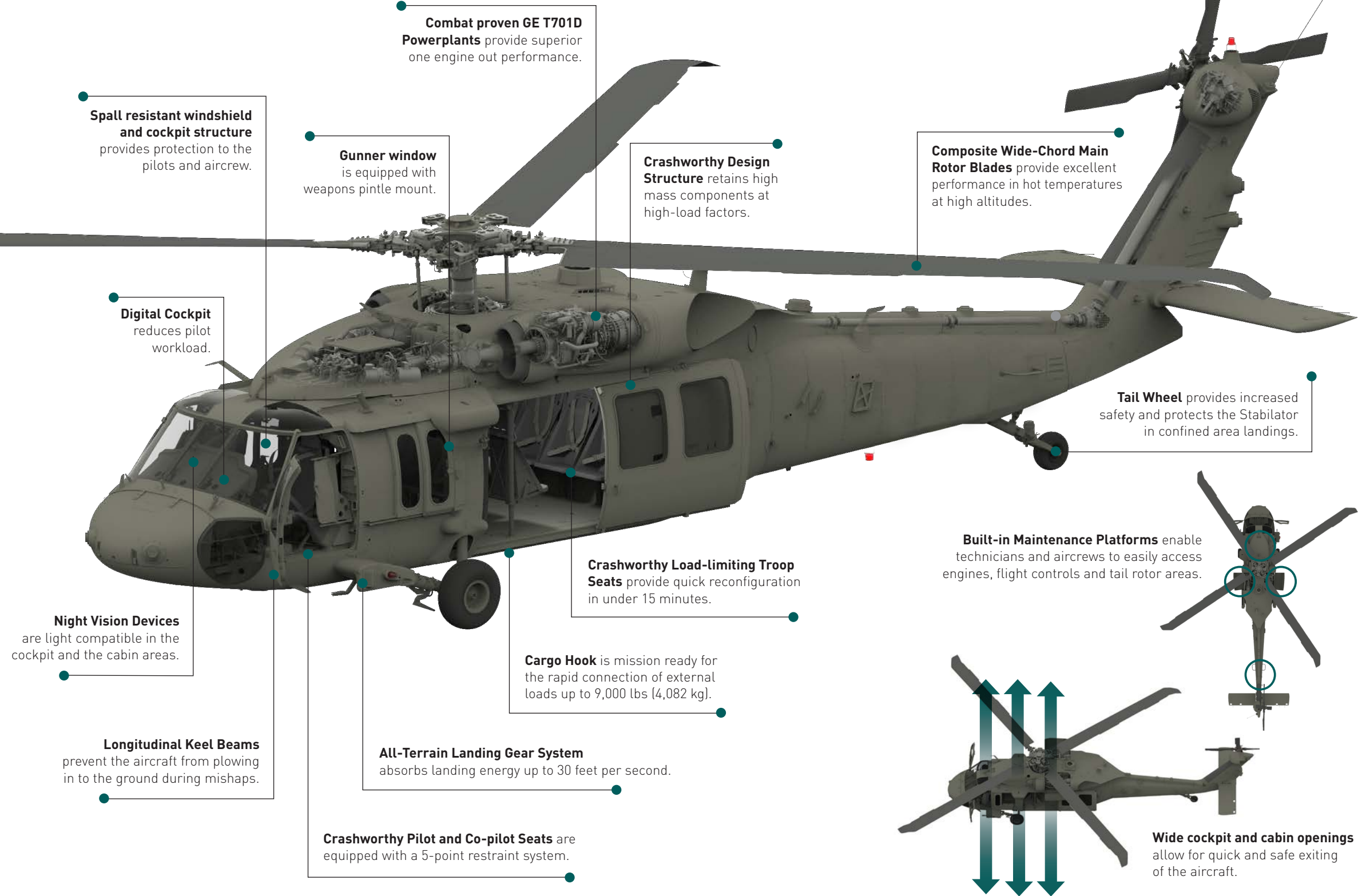


Interoperable

36 nations, including 14 NATO countries have selected the venerable BLACK HAWK® Helicopter. Designed to meet the needs of international operators, the BLACK HAWK® Helicopter is renowned for its ability to conduct operations anywhere in the world.

KEY DIFFERENTIATORS

Capability and Performance Make for a Successful Mission



KEY ADVANTAGES



USEFUL LOAD
10,350 lbs (4,695 kg)



RANGE
Baseline 281 nm (520 km)
Extended Ops 400 nm (740 km)



MAX CRUISE SPEED
145 kts (268 km/hr)



HOT TEMP/HIGH ALTITUDE
Superior Performance



EXTERNAL LOAD
9,000 lbs (4,082 kg)



AIR TRANSPORTABLE
C-5, C-17, C-130, IL76



CABIN SEATING
12 + 2 Aircrew



CABIN ACCESS
68 in (1.7 m)



CABIN VOLUME
396 ft³ (11.2 m³)

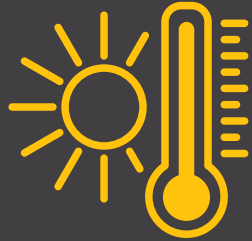
S-70™ BLACK HAWK® HELICOPTER

DESIGNED FOR EXTREMES

Equipped to Operate Safely Wherever Your Mission Takes You

BLACK HAWK® Helicopters are designed to operate in Hot/Sandy environments.

Qualified to meet High Temperature Operations of +55°C continuous

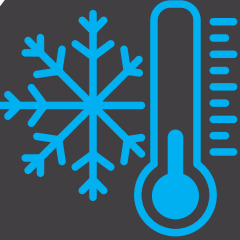


55°C / 131°F

Designed to demanding Military Standards, the BLACK HAWK® Helicopter exceeds Civil requirements for operations in extreme temperatures.

BLACK HAWK® Helicopters are designed to operate in Cold/Icing conditions.

BLACK HAWK® Helicopters have proven capability in places where other aircraft cannot operate.



-40°C / -40°F

Qualified to meet Cold Temperature Operations of -40°C continuous

ONE AIRCRAFT, MANY MISSIONS

Adapt Quickly, Respond Effectively



Border Patrol

- Maritime Security
- Port Surveillance
- Anti-Piracy Operations
- Search and Rescue



Armed BLACK HAWK® Helicopter

- Close Air Support
- Highly Accurate Targeting
- Various Armament/Fuel Configurations
- Stable Weapons Platform



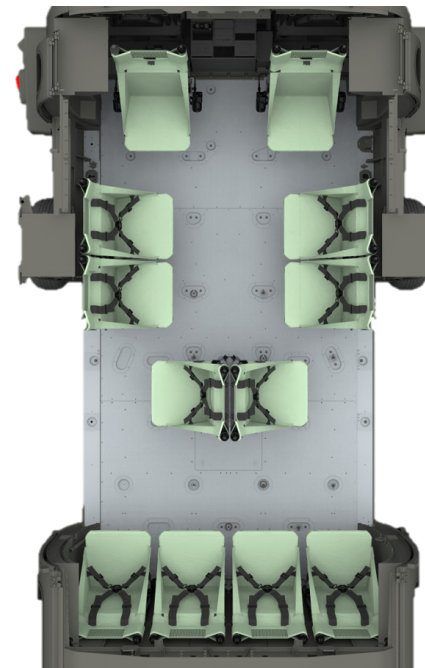
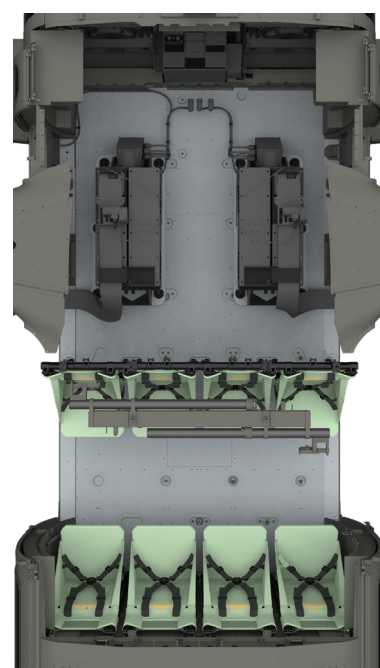
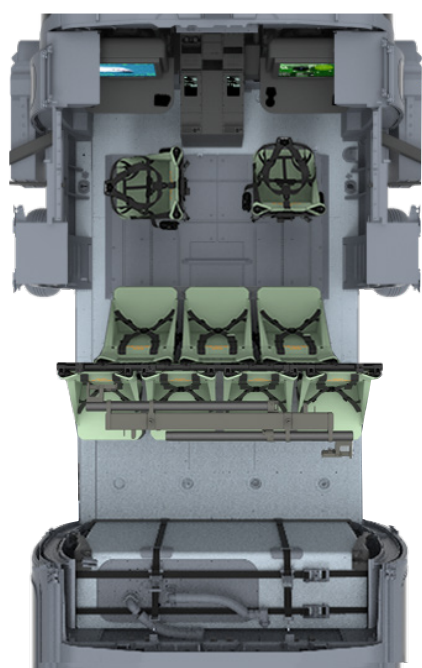
FIREHAWK®

- 1000 Gallon Water Tank
- Rapid Water Fill in 45 sec. From Any Source
- Search and Rescue Ready
- Insert/Extract up to 13 Firefighters



Head of State

- Flown and Trusted by 11 Nations
- Protection for Dignitaries
- Combat Crashworthiness/Survivability
- Durability for Austere Environments



BLACK HAWK® Helicopters Have a Long Legacy of Innovation Dedicated to the Support of Your Mission



ROADMAP TO 2070
Modernization planning
vigorously supported



**FLEXIBLE FUEL
CONFIGURATION**
Expand your range
up to 400 nm



**QUICK CABIN
RECONFIGURATIONS**
Transport to SAR to Attack
in under 3 hours



LOW RISK
Militarized Aircraft

MILITARY DESIGN ADVANTAGES

Designed for the Harsh Conditions of Combat

Safe & Agile

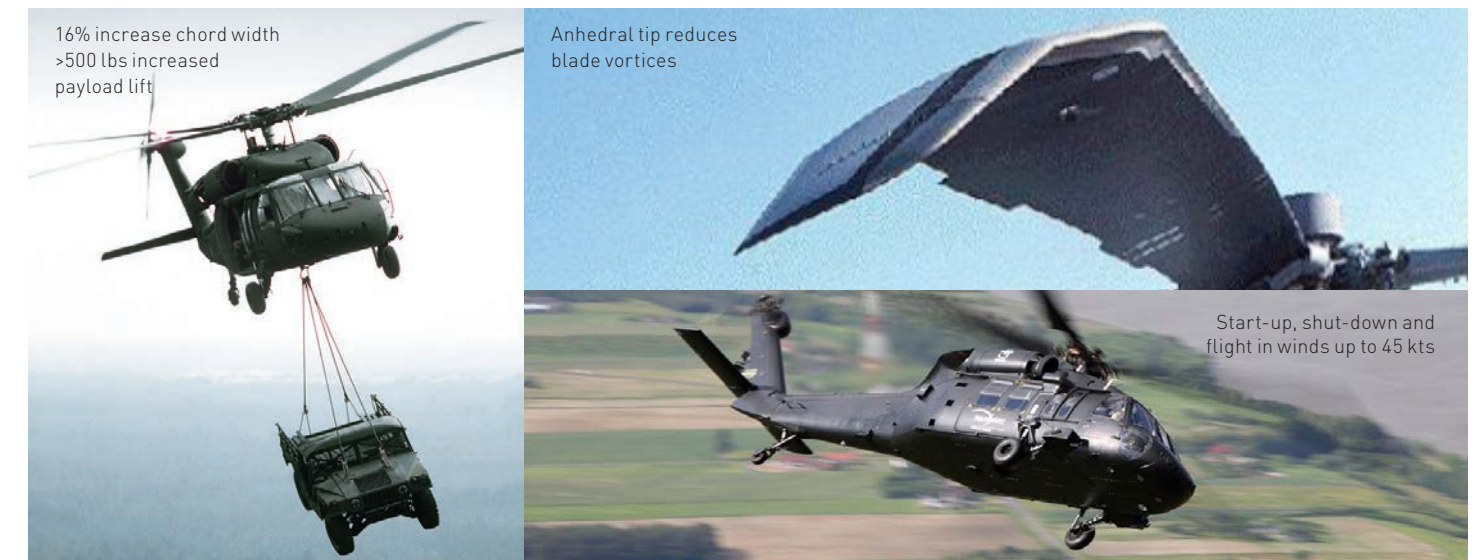
The Tail Wheel protects the aircraft in high-flare landings and provides maneuverability when repositioning on the ground.



Evasive & Maneuverable

The BLACK HAWK® Helicopter is ballistically tolerant and agile with a High Vertical Rate of Climb (VRoC) and Angle of Bank.

3rd Generation Composite Wide Chord Main Rotor Blades provide improved tactical performance.



Energy Attenuating, 3-Wheeled Landing Gear



Energy attenuating, non-tricycle wheeled landing gear designed for unprepared landing zones and sloped areas:

- Absorbs energy in the event of a mishap/hard landing thereby protecting occupants from high loads.
- Landing Gear withstands sink rate of 30 fps with airframe 38 fps making it more than 5x safer than commercial aircraft.
- Allows for taking off and landing in significantly higher sloped terrain and/or unprepared surfaces.

Air Lift Transportable

Easily Transportable & Storable - Deployment <4 Hours



S-70™ BLACK HAWK® HELICOPTER CUSTOMIZATION OPTIONS

MISSION EQUIPMENT

- 1000 gal Water Tank w/ Integrated Retractable Snorkel
- AFC Mark on Top for SAR
- Armed configurations
- Color Weather Radar
- Commercial Radios w/ Emergency Lighting System
- Electro-Optical/Infrared System
- Engine Inlet Barrier Filter
- Environmental Control System
- Extended Landing Gear
- External Electric Rescue Hoist
- Flight Following SATCOM
- FRIES (Fast Rope Insertion and Extraction System)
- Helicopter Emergency Lighting System
- High-Powered Search Light
- Manual Blade Fold Kit
- Medical Interior
- Mission Planning System
- Moving Map System
- Power Sonic Loudhailer
- Triple Patient Litter System
- Wireless Communications





SPECIFICATIONS

Performance (Estimated)

Standard day sea level, maximum gross weight (GW)	22,000 lb (unless otherwise noted)	
Maximum Speed (Vne)	163 kts	302 km/hr
Maximum Cruise Speed (Vh)	145 kts	268 km/hr
Economy Cruise Speed (99% Vbr)	128 kts	237 km/hr
Maximum Range (no reserve)	268 nm	496 km
Maximum Rate of Climb	2,020 ft/min	10.26 m/sec
Maximum Ceiling	20,000 ft	6,097m
Service Ceiling	15,000 ft	4,572 m
Hover Ceiling - OGE	6,200 ft	1,890m
Hover Ceiling - IGE	10,270 ft	3,130 m
OEI Service Ceiling	6,780 ft	2,067 m

Fuel Capacity

Baseline Fuel Capacity	360 gal	1,362 L
Internal Aux	2 x 200 gal	1,514 L
	1 x 200 gal	757 L

Cabin Dimensions

Utility Configuration	2 Pilots, 2 Cabins Crew Members and 11 Troops	
Cabin Length	12.58 ft	3.84 m
Cabin Width (on floor)	6.00 ft	1.82 m
Cabin Width (at door)	7.00 ft	2.13 m
Cabin Height	4.52 ft	2.95 m
Cabin Area	88.00 ft ²	8.18 m ²
Cabin Volume	396.00 ft ³	11.21 m ³
17 Tie-down Rings		
Cargo floor rated at 300 psf (1,464 kg/m ²)		
Two storage compartments (20.34 cu-ft) over fuel cells		

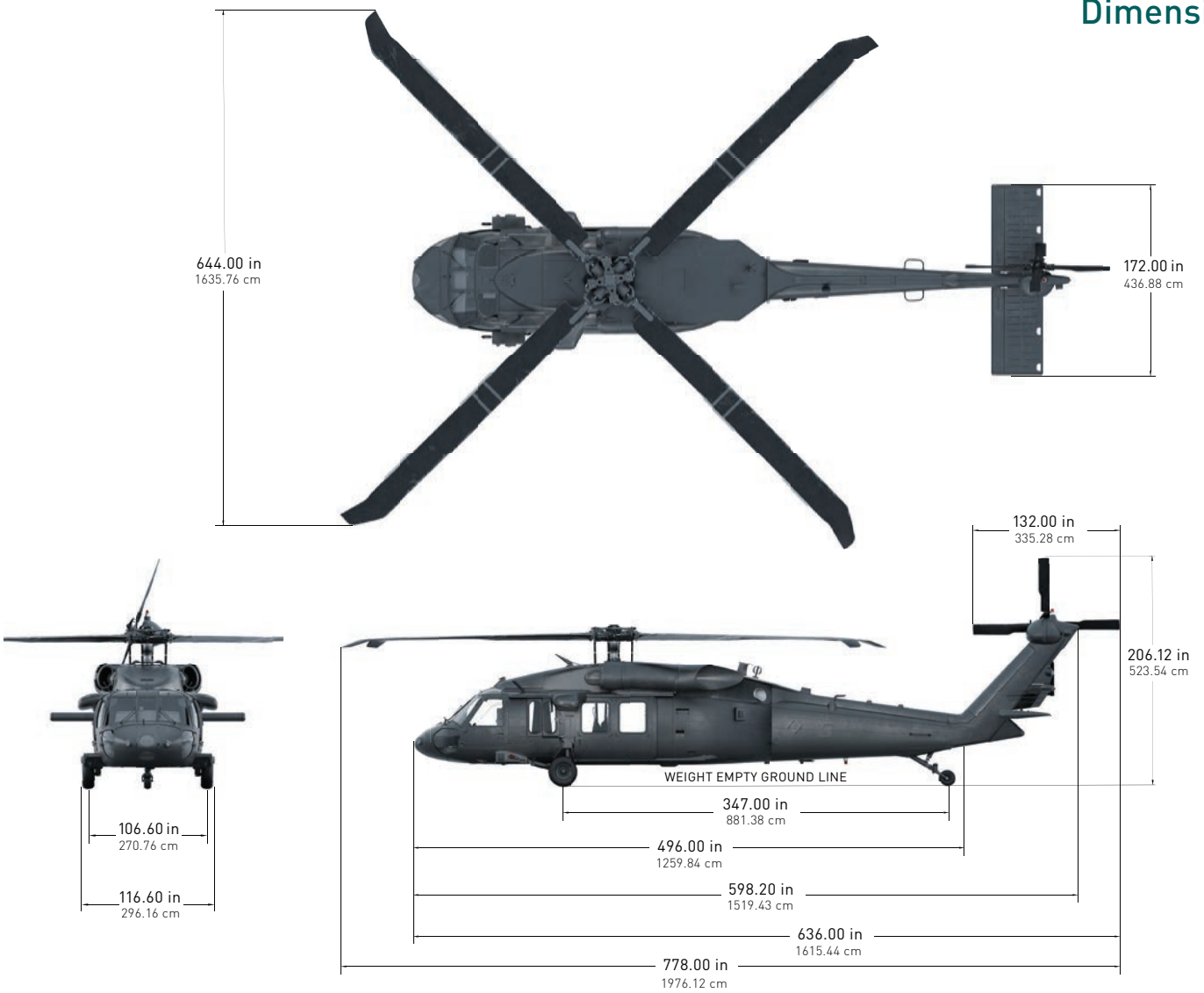
Weights

Empty Weight (excludes 11 cabin troop seats, 207 lb)	11,853 lb	5,376 kg
Maximum Take-off Gross Weight	22,000 lb	9,979 kg
Maximum Take-off Gross Weight (external load and with Firefighting water tank installed)	23,500 lb	10,659 kg

Power Plants (Sea Level Standard)

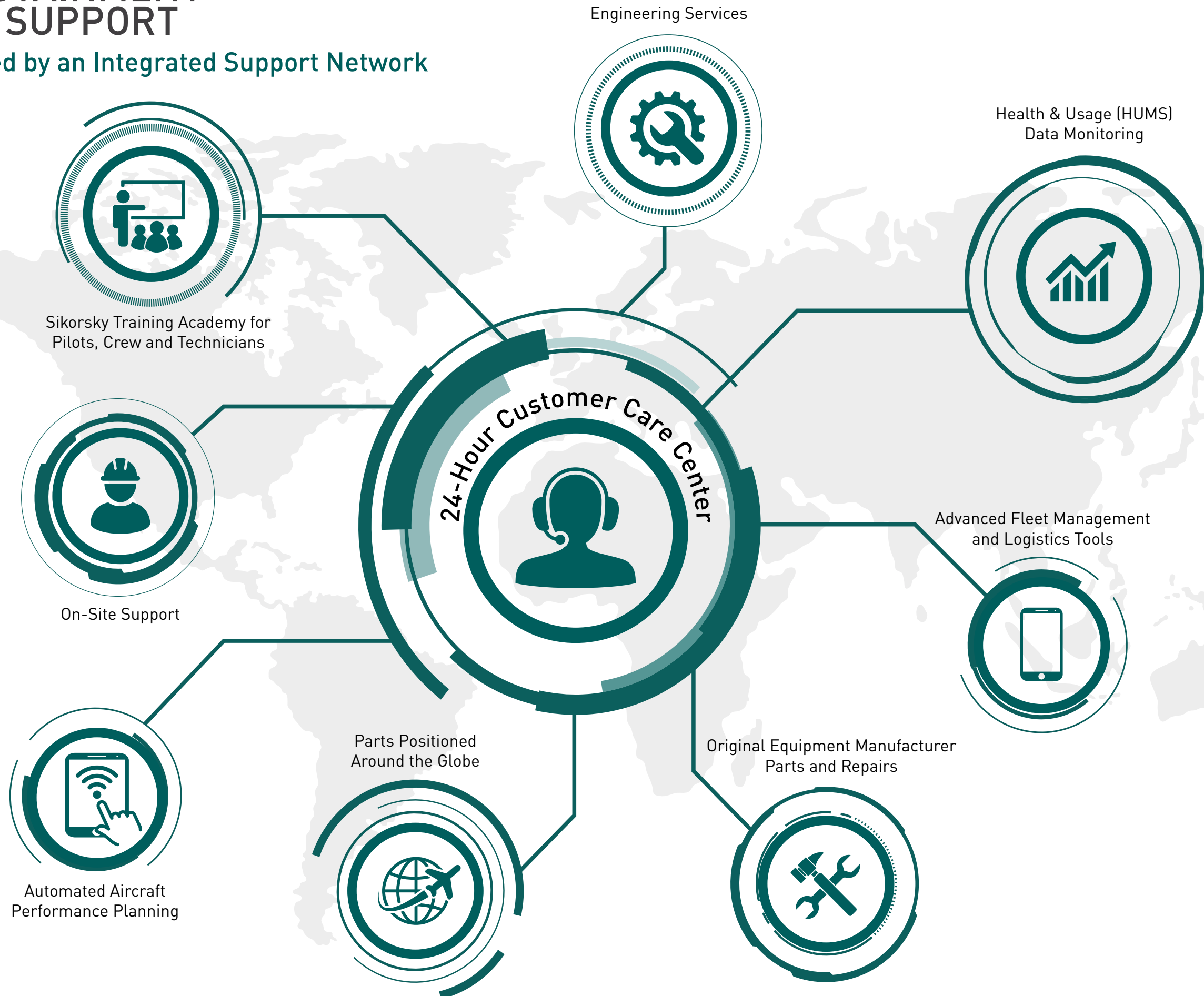
Quantity/Type	Two (2) - T700-GE-701D	
2.5 Minute OEI Contingency	1,972 shp	1,471 kW
10 Minute Takeoff Power	3,910 shp	2,916 kW
30 Minute Intermediate Power	3,738 shp	2,788 kW
MAX Continuous Power	3,356 shp	2,502 kW

Dimensions



GLOBAL SUSTAINMENT & PRODUCT SUPPORT

Availability Enabled by an Integrated Support Network



OVER 100 YEARS OF INNOVATION

Proud of Our Legacy...Excited About Our Future



“I always believed that the helicopter would be an outstanding vehicle for the greatest variety of lifesaving missions.”

Igor I. Sikorsky
Legendary Aviation Pioneer
Founder of Sikorsky



UH-60M



UH-60L



S-70™



UH-60A



BLACK HAWK[®]

Always Mission Ready



6900 Main Street,
Stratford, Connecticut 06615 USA
+1 (800) WINGED-S (946-4337)
International +1 (203) 386-3029
www.lockheedmartin.com/sikorsky

<https://www.lockheedmartin.com/blackhawk>

BLACK HAWK[®] is a registered trademark of Lockheed Martin Corporation
This Page Does Not Contain Exported Controlled Technical Data. ©2024 Sikorsky, A Lockheed Martin Company 9221 16/24

SIKORSKY
A LOCKHEED MARTIN COMPANY